

Sensor

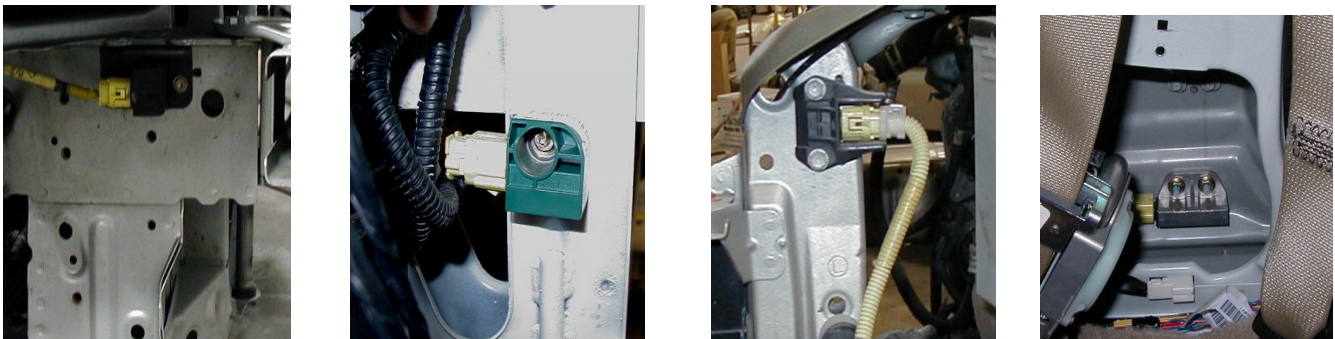
DISCLAIMER: Serious injury or death can be a result of improper removal/installation techniques. Follow manufacturer's instructions for disabling Restraint Systems PRIOR to working on any airbag component.

Airbags are a dangerous and powerful safety restraint system and should not be taken lightly or tampered with. If you are not a qualified/ certified technician, seek the help of a professional to service the airbag system on your vehicle.

Airbag systems use a multitude of sensors to determine the risk to occupants during a collision. The remote sensors are located throughout the vehicle, each designated to a specific Airbag Module. (front sensor -front airbags, side sensor-side airbags).



Remote sensors are mounted in numerous places; front frame rails, radiator core supports, front cowl, "A" pillars, "B" Pillars, "C" Pillars, roof, quarter panels, and floors. Each manufacturer determines the exact location and the requirements for replacement after a collision and/or deployment



Not all vehicles have remote sensors. Those that do not have remote sensors use the Control Unit to detect all of the deployment criteria.